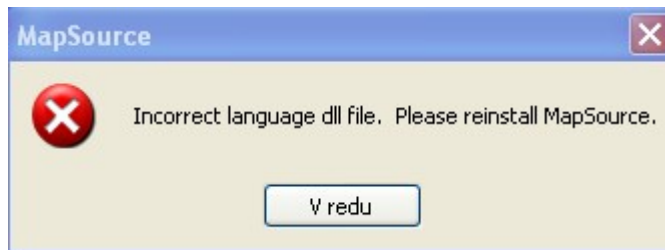


Garmi Mapsource:Missing or Incorrect Language.dll file

Question:Has anyone had experience with Mapsource reporting an incorrect or missing Language.dll file..?



Answer:

Missing Language files in MapSource:

Open my computer; Go to your c drive

Open the Garmin folder then delete the following files mapsource_lang.dll & mapsource.exe

Then re-install the software and it should be fine

Moj Komentar:

mapsource_lang.dll pomeni vse datoteke (npr. MapSourceSLV.dll oziroma od MapSourceCHS.dll MapSourceTRK.dll in še mapsource.exe!!!

Potem ponovno instaliraj Mapsource!!!

Sandi